

Ribbons

When ordering ribbon, please provide both the name of the ribbon and the width you would like in addition to the tie and the location on your invitation. Proofs will show "For Position Only" ribbon and may not accurately portray the width or color of your final selection.



EVERGREEN

FINISH: *Double Face Satin* | SIZE: $\frac{3}{8}$ ", $\frac{5}{8}$ ", $\frac{7}{8}$ "



CREAM

FINISH: *Double Face Satin* | SIZE: $\frac{1}{8}$ ", $\frac{3}{8}$ ", $\frac{5}{8}$ ", $\frac{7}{8}$ ", $1\frac{1}{2}$ "

AS SEEN IN: *Paper Bouquet* - page 48

**New manufacturer; color may vary*



GRAPE LEAVES GREEN

FINISH: *Double Face Satin* | SIZE: 1"

AS SEEN IN: *Modern Wedding* - page 51;

Unveiled - page 14



SOFT PEACH

FINISH: *Double Face Satin* | SIZE: 1"

AS SEEN IN: *Unveiled* - page 12

**Replaces Nude Ribbon.*

New manufacturer; color may vary



GREEN & WHITE STRIPES

FINISH: *Woven* | SIZE: $\frac{3}{8}$ "

AS SEEN IN: *Simcha* - page 23



MULBERRY

FINISH: *Single Face Satin* | SIZE: $\frac{7}{8}$ ", $1\frac{1}{2}$ "

AS SEEN IN: *Modern Wedding* - page 30

Keepsake - page 12



WINE

FINISH: *Double Face Satin* | SIZE: $\frac{3}{8}$ ", $\frac{5}{8}$ ", $\frac{7}{8}$ "

AS SEEN IN: *Heritage* - page 29



BROWN

FINISH: *Double Face Satin* | SIZE: $\frac{3}{8}$ ", $\frac{5}{8}$ ", $\frac{7}{8}$ "

AS SEEN IN: *Modern Wedding* - page 6;

Unveiled - page 3; *Paper Bouquet* - page 46



WHITE

FINISH: *Double Face Satin* | SIZE: $\frac{1}{8}$ ", $\frac{3}{8}$ ", $\frac{5}{8}$ ", $\frac{7}{8}$ ", 1", $1\frac{1}{2}$ "

AS SEEN IN: *Modern Wedding* - page 2;

Unveiled - page 3; *Paper Bouquet* - page 24



LAVENDER

FINISH: *Double Face Satin* | SIZE: $\frac{1}{4}$ ", $\frac{3}{8}$ ", $\frac{5}{8}$ ", $\frac{7}{8}$ "



FUCHSIA BEAUTY

FINISH: *Double Face Satin* | SIZE: $\frac{5}{8}$ "

AS SEEN IN: *Modern Wedding* - page 1;

Brides - page 13



RED

FINISH: *Double Face Satin* | SIZE: $\frac{7}{8}$ "

AS SEEN IN: *Brides* - page 17

Ribbons

When ordering ribbon, please provide both the name of the ribbon and the width you would like in addition to the tie and the location on your invitation. Proofs will show "For Position Only" ribbon and may not accurately portray the width or color of your final selection.



BLACK

FINISH: *Double Face Satin* | SIZE: 1/8", 3/8", 5/8", 1", 1 1/2"

AS SEEN IN: *Modern Wedding* - page 5;
Brides - page 15; *Paper Bouquet* - page 1;
Unveiled - page 12



AQUAMARINE

FINISH: *Double Face Satin* | SIZE: 3/8", 5/8", 1"

AS SEEN IN: *Brides* - page 3; *Unveiled* - page 9;
Modern Wedding - page 14; *Simcha* - page 21



CHARTREUSE

FINISH: *Double Face Satin* | SIZE: 3/8", 5/8", 7/8"

AS SEEN IN: *Modern Wedding* - page 27;
Simcha - page 7; *Unveiled* - page 8



STORM

FINISH: *Double Face Satin* | SIZE: 1"

AS SEEN IN: *Modern Wedding* - page 7;
Brides - page 2; *Unveiled* - page 11



AMARILLO

FINISH: *Double Face Satin* | SIZE: 1"

AS SEEN IN: *Brides* - page 1
Keepsake - page 4



BLACK

FINISH: *Wrinkled* | SIZE: 1 1/2"

AS SEEN IN: *Modern Wedding* - page 37;
Brides - page 12



PINK

FINISH: *Double Face Satin* | SIZE: 5/8"

AS SEEN IN: *Tradition* - page 11



APRICOT

FINISH: *Double Face Satin* | SIZE: 3/8", 5/8", 1"

AS SEEN IN: *Tradition* - page 32



DARK SLATE

FINISH: *Single Face Satin* | SIZE: 1 1/2"

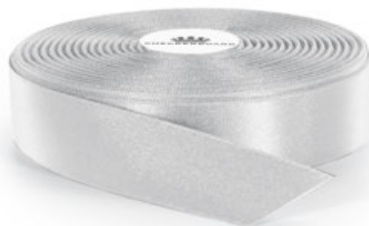
AS SEEN IN: *A Marry Occasion* - page 54



NAVY

FINISH: *Double Face Satin* | SIZE: 1"

AS SEEN IN: *Tradition* - page 37;
A Marry Occasion - page 11



PLATINUM

FINISH: *Double Face Satin* | SIZE: 1"

AS SEEN IN: *Modern Bar/Bat Mitzvah* - page 7;
A Marry Occasion - page 14



TEAL

FINISH: *Double Face Satin* | SIZE: 1 1/2"

Ribbons

When ordering ribbon, please provide both the name of the ribbon and the width you would like in addition to the tie and the location on your invitation.
Proofs will show "For Position Only" ribbon and may not accurately portray the width or color of your final selection.



GREY

FINISH: *Pleated* | **SIZE:** 1 1/2"

AS SEEN IN: *Fusion* - Gilded ensemble



DARK PURPLE

FINISH: *Double Face Satin* | **SIZE:** 3/8", 5/8", 7/8"



COPPER

FINISH: *Double Face Satin* | **SIZE:** 7/8"

Ribbons

After choosing your ribbon color and width, please indicate the type of tie you would like to use:



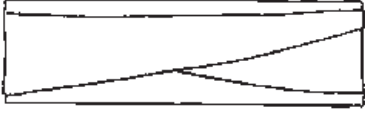
KNOT BAND
(with 1 ribbon)



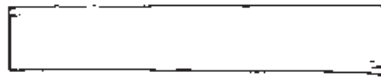
TWIST



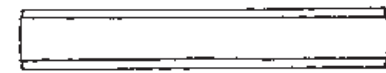
DOUBLE KNOT
with 2 ribbons



OBI WRAP
(with 1 ribbon)



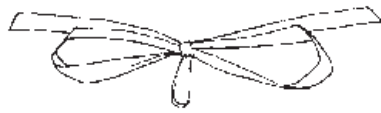
FLAT BAND



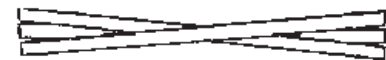
DOUBLE BAND
with 2 ribbons



LOOP



SIMPLE BOW
Tied through a drilled hole



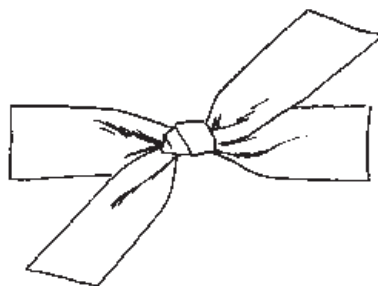
TRIPLE WRAP



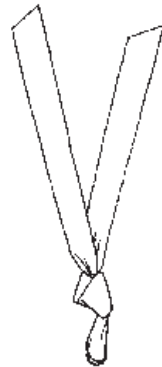
KNOT



DOUBLE WRAP



KNOT WITH TAILS



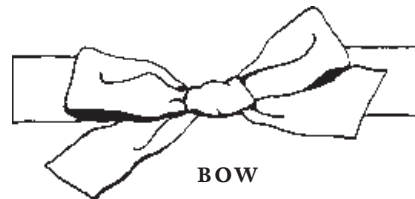
SLIP KNOT
Tied through a drilled hole



PROGRAM KNOT



BOWTIE



BOW